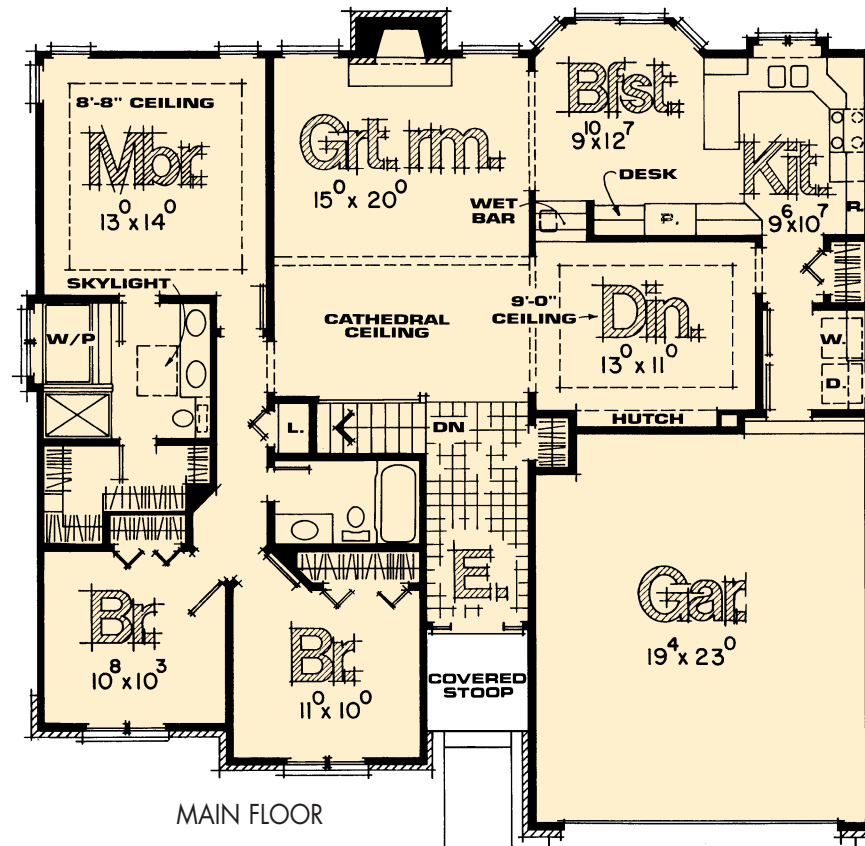


# Rosebury

- Spacious 10-foot entry
- Large volume great room with fireplace flanked by windows to the back seen from entry
- See-thru wet bar between dinette and dining room with formal ceiling
- Fully-equipped kitchen with desk, pantry and special window box above sink
- Angles in hallway for secondary bedrooms create interesting effect
- Secondary bedrooms share convenient hall bath
- Roomy master suite with volume ceiling equipped with special amenities including skylit dressing/bath area with plant shelf, large walk-in closet, double vanity and whirlpool tub
- Extra deep garage



REAR ELEVATION



MAIN FLOOR

## MODEL NO. 1767-40R

1 STORY

3 Bedrooms ♦ 2 Baths

Length .....48'-8"

Depth .....48'-0"

Total Area .....1,604 sq. ft.