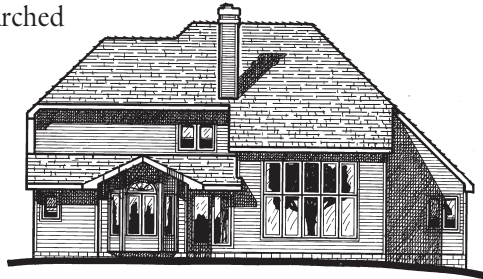
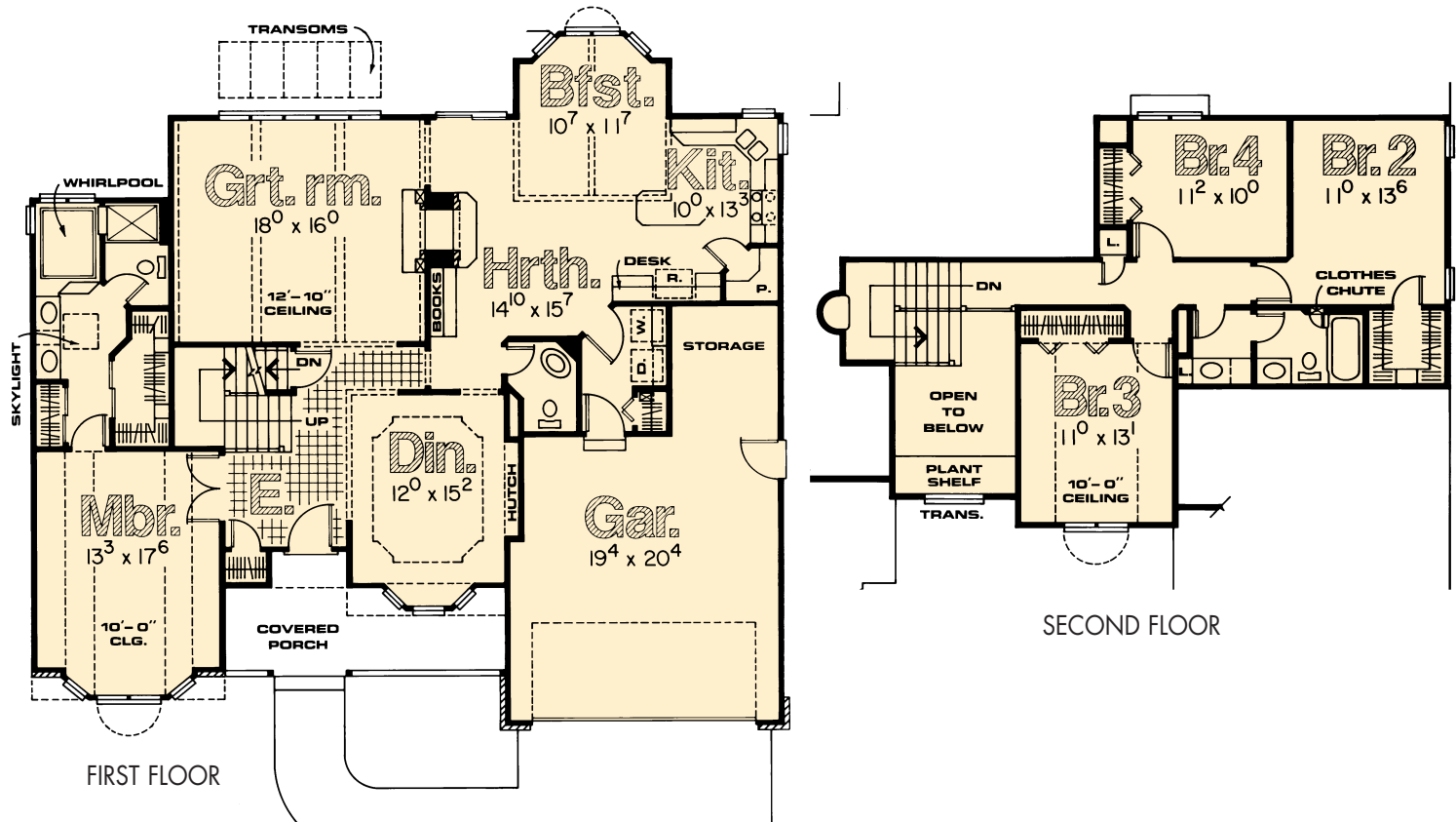


Manchester

- Covered porch and elegant arched windows highlight front elevation
- 2-story entry showcases stairway and formal dining room with bayed window
- Superb great room has see-thru fireplace and windowed wall for elegant rear view
- Livable island kitchen /breakfast /hearth room features arched window, cathedral ceiling, walk-in pantry and bayed dining
- Second level features interesting sill detail on landing and plant shelf over looking area below
- Comfortable secondary bedrooms share compartmented bath with separate lavs and clothes chute
- Main level master suite with arched window, volume ceiling, dual lavs, whirlpool tub and two closets



REAR ELEVATION



MODEL NO. 1862-40R

1-1/2 STORY

4 Bedrooms ♦ 2½ Baths

Length54'-0"

Depth50'-0"

First Floor1,653 sq. ft.

Second Floor700 sq. ft.

Total Area2,353 sq. ft.