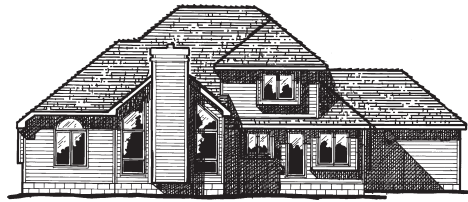
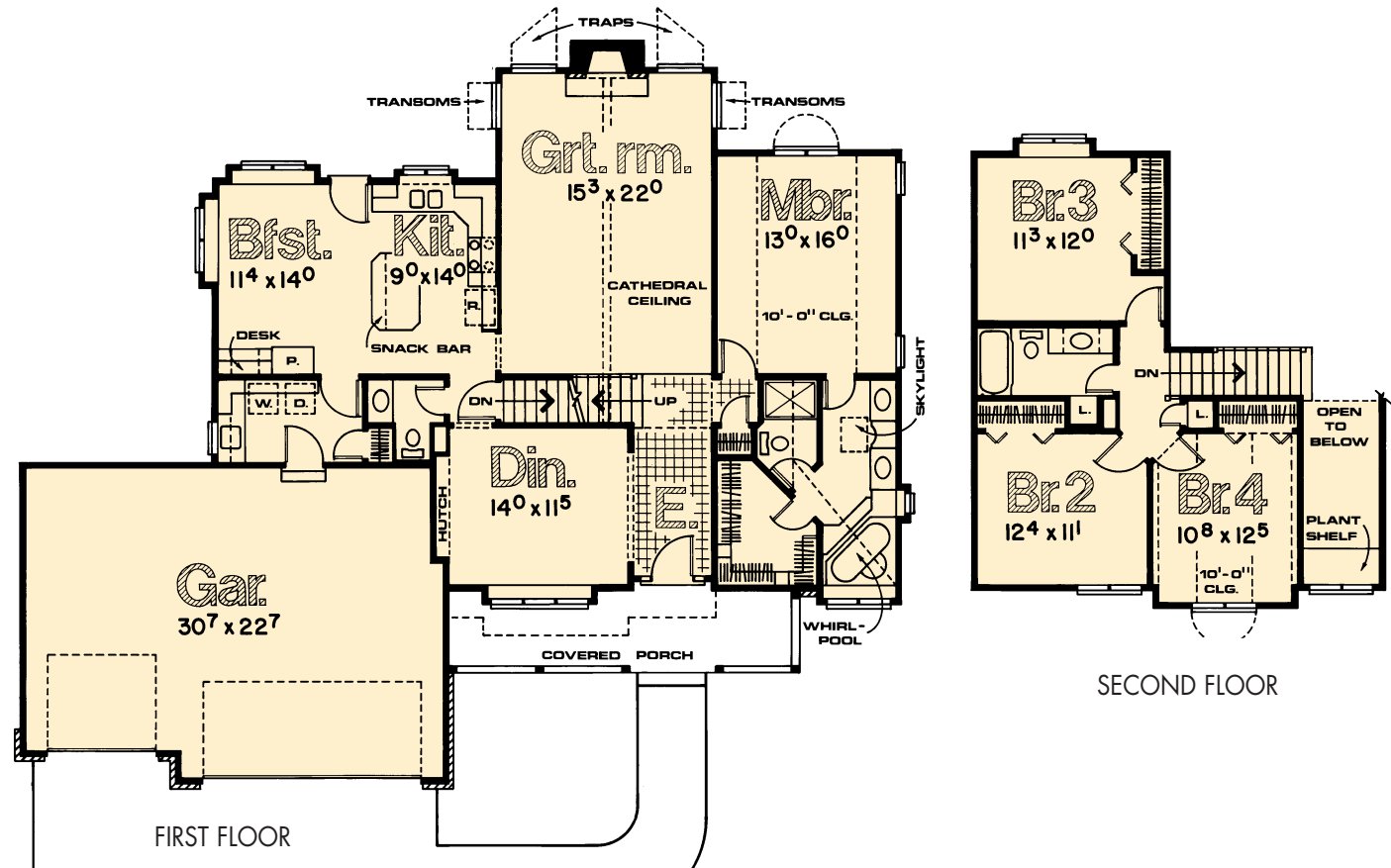


Prairie

- Expansive front elevation enhanced by covered porch alludes to sophisticated interior.
- Dramatic entry surveys dining room with hutch space and elegant great room beyond
- Expansiveness of great room is enriched by cathedral ceiling and trapezoid windows
- Kitchen/breakfast area with nearby laundry and powder bath is designed for convenience and ease of living
- Secondary bedrooms secluded on second level, bedroom #4 with volume ceiling and arched window
- Main floor master suite contains skylit dressing area, corner whirlpool and spacious walk-in closet



REAR ELEVATION



MODEL NO. 2285-40R
 1-1/2 STORY
 4 Bedrooms ♦ 2½ Baths

Length64'-0"
 Depth.....52'-0"
 First Floor.....1,505 sq. ft.
 Second Floor.....610 sq. ft.
 Total Area.....2,115 sq. ft.