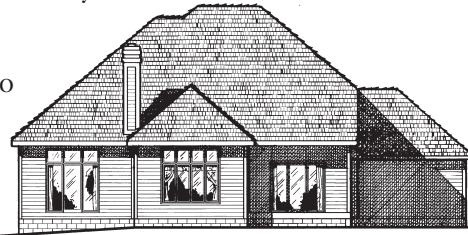
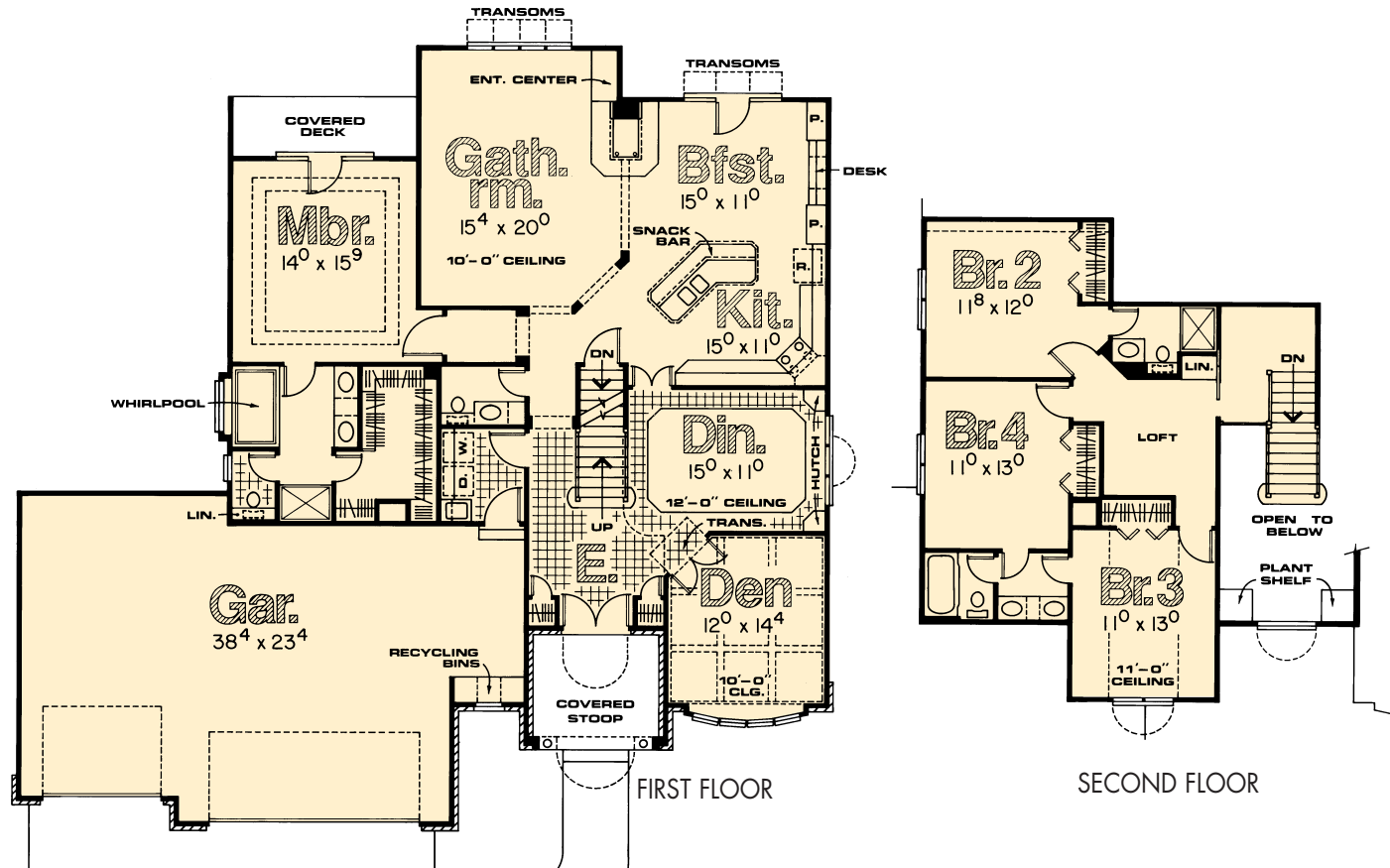


# Rollins



REAR ELEVATION

- Columns and double doors at entry create a majestic elevation
- 12' tall dining room open to spacious 2-story entry
- Spider beams and bowed window add sophistication to den
- French doors in dining room open to island kitchen and dinette which share
- 3-sided fireplace with gathering room
- Secluded master suite boasts private covered deck, whirlpool bath and large walk-in closet
- Popular 3-car garage includes recycling center and convenient laundry room access
- Bedroom #2 has private 3/4 bath and a compartmented bath has private access from bedrooms #3 and #4



**MODEL NO. 2894-40R**  
 1-1/2 STORY  
 4 Bedrooms + Den ♦ 2½ Baths

Length .....	62'-0"
Depth .....	60'-8"
First Floor .....	1,800 sq. ft.
Second Floor .....	803 sq. ft.
<b>Total Area .....</b>	<b>2,603 sq. ft.</b>